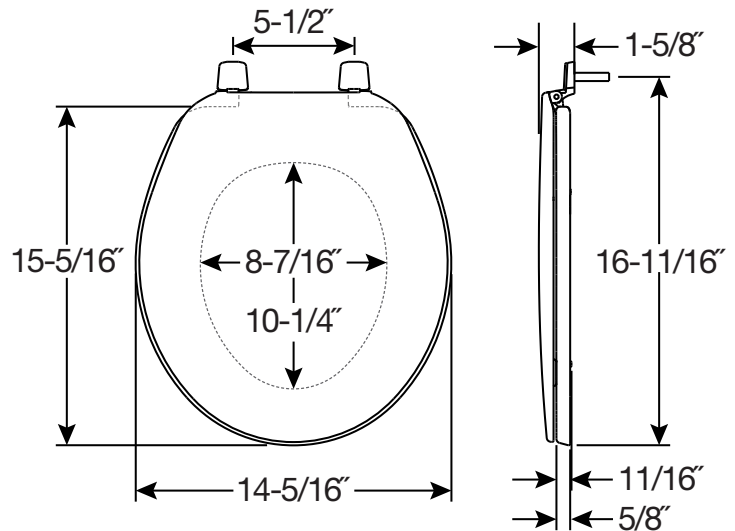


RESIDENTIAL PLASTIC TOILET SEAT



FEATURES:

- **Top-Tite® Hinges**
Seat installs easily from above the bowl



SPECIFICATIONS:

Size: Round

Material: Plastic

Style: Closed Front with Cover

Ring Bumpers: Four

Hinges: Plastic

Hardware: Non-Corroding Hex-Tite™ Bolts and Wing Nuts

Codes & Standards:



Complies with
IAPMO/ANSI Z124.5
Performance Standards
Residential



Proudly Made in the USA

Eco-Friendly

