

# MAGIC MAGNET SYSTEM

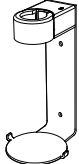
## BRACKET INSTALLATION INSTRUCTIONS

### SCREW INSTALLATION

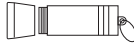
#### PARTS



1x 310ml Bottle



1x Holder



1x Magnet key

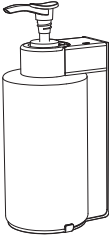


2x Screw

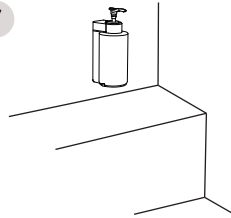


1x Expansion screw (Bolt)

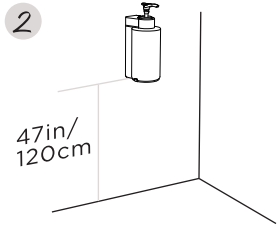
#### INSTALLATION HEIGHT



1

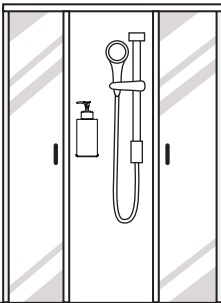


2



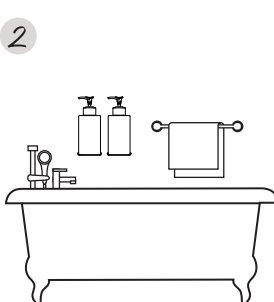
#### APPLICATION SCENARIO

1



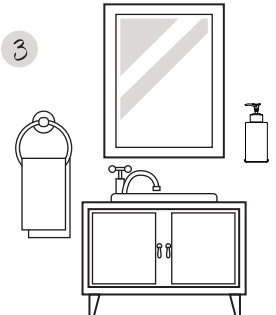
SHOWER ROOM

2



BATHTUB

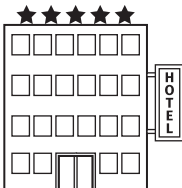
3



HAND SINK

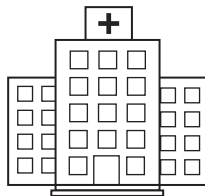
#### SUITABLE PLACE

1



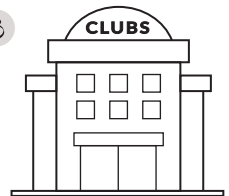
HOTEL

2



HOSPITAL

3

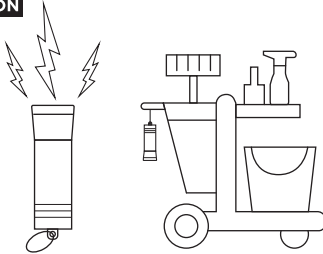


CLUBS

# MAGIC MAGNET SYSTEM

## BRACKET INSTALLATION INSTRUCTIONS

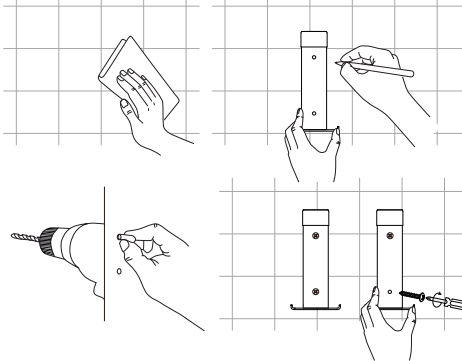
### MAGNET KEY ATTENTION



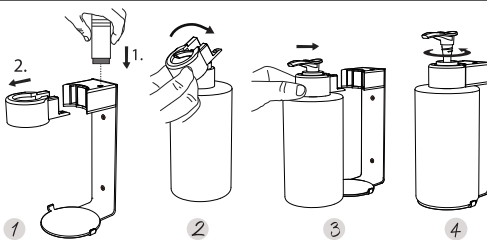
1. It is strictly forbidden to use magnetic key to contact all electronic devices and IC cards.
2. Every user should consider the information given in this instruction in the context of how this product will be used in the user's workplace, including the effects of other products on the premises.



### SCREW INSTALLATION



1. Clean the wall with alcohol wipe. Make sure the surface is fully dry before installation.
2. Determine the proper placement of dispenser. Mark the reference lines with a pencil and then remove the positioning plate.
3. Drill the holes at the marked positions. Insert the expansion screws into the holes by hand and then tap gently with hammer.
4. Press the bracket onto the wall and use a screwdriver to tighten all screws.
5. Repeat the above process for other brackets.
6. Place a line of adhesive caulk around the bracket to prevent water and grime from getting behind to the bracket. Wipe away any excess caulk. Wait for 24 hours before inserting the bottles to allow caulk to solidify.



1. Open the key, align the magnetic head with the position of the lock on the rear side of the bracket, and lift to remove the card sleeve.
2. Insert the card sleeve into the pressure pump as shown in the diagram.
3. Align the card sleeve and bottle together and insert them into the slot.
4. Release the pump by turning it counterclockwise several times until it comes up.
5. The soap dispenser is installed and ready for use!

### ATTENTION

1. Please do not clean this bracket with corrosive detergent.
2. Keep away from fire or other heating equipment.
3. Please do not squeeze too hard.
4. Recommended service life 2 years.